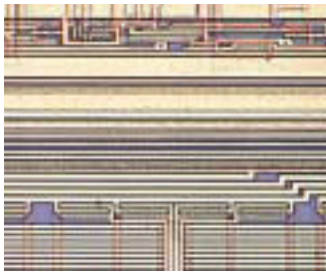


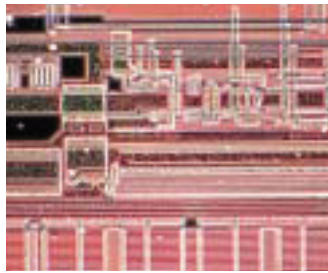
# Applications

Semiconductor (wafer)



Brightfield

Semiconductor (wafer)



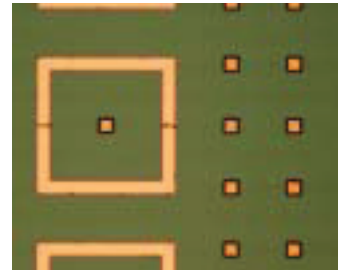
Darkfield

MEMS (optical switch)



Brightfield

Micro Bump



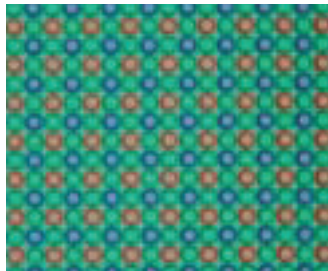
Brightfield

Compact Disc (CD)



Simple polarizing

Image Sensors (CCD)



Brightfield

PCB (ion migration)



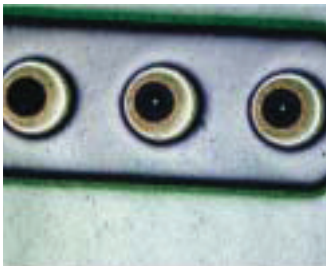
Brightfield

PCB (ion migration)



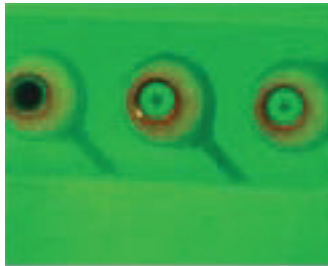
Epi-fluorescence

PCB



Brightfield

PCB



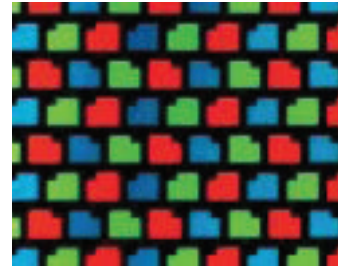
Epi-fluorescence

Precision Mold



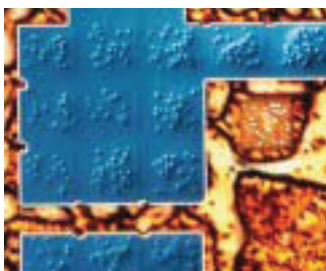
DIC

LCD (color filter)



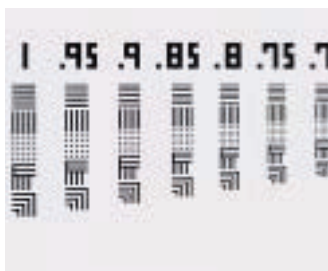
Diascopic brightfield

LCD (conductive particle)



DIC

Test reticle



Diascopic brightfield

Spodumene



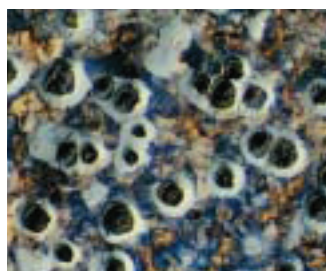
DIC

Carbon Paper



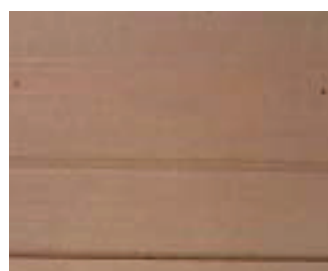
Brightfield

Nodular Graphite Cast Iron



DIC

Tourmaline



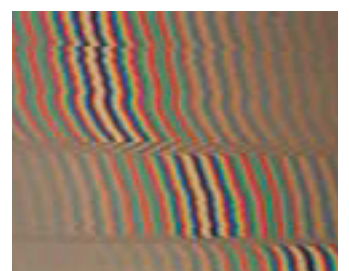
Brightfield

Tourmaline



DIC

Tourmaline



Double-beam interferometry