

# pco.edge 26

global shutter sCMOS camera



**deep cooled**  
down to -20° C

**true charge domain**  
global shutter

**compact design**

appropriate for  
**long exposure times**

**high resolution**  
5120 x 5120 pixel

1288   
EMVA Standard Compliant

# pco.

» sCMOS image sensor

<b>type of sensor</b>	global shutter scientific CMOS (sCMOS) monochrome
<b>resolution (h x v)</b>	5120 x 5120 active pixel
<b>pixel size (h x v)</b>	2.5 µm x 2.5 µm
<b>sensor format / diagonal</b>	12.8 mm x 12.8 mm / 18.1 mm
<b>shutter mode</b>	global/snapshot shutter (GS)
<b>MTF</b>	200 lp/mm (theoretical)
<b>fullwell capacity</b>	4500 e <sup>-</sup>
<b>readout noise (typ.)<sup>1</sup></b>	2.3 <sub>med</sub> e <sup>-</sup> / 2.5 <sub>rms</sub> e <sup>-</sup>
<b>dynamic range (typ.)</b>	66 dB
<b>quantum efficiency</b>	72 %
<b>spectral range</b>	320 nm .. 1000 nm
<b>dark current (typ.)</b>	0.09 e <sup>-</sup> /pixel/s @ -10 °C
<b>DSNU</b>	< 1 e <sup>-</sup> rms
<b>PRNU</b>	< 0.9 %
<b>parasitic light sensitivity</b>	1/10000

» camera system

<b>frame rate</b>	7.1 fps @ full resolution
<b>exposure / shutter time</b>	5 µs .. 60 s
<b>dynamic range A/D</b>	12 bit
<b>A/D conversion factor</b>	1.4 e <sup>-</sup> /DN
<b>pixel data rate</b>	267 Mpixel/s
<b>binning horizontal</b>	x1, x2, x4
<b>binning vertical</b>	x1, x2, x4
<b>region of interest (ROI)</b>	horizontal: steps of 32 pixel (min. 32) vertical: steps of 1 pixel (min. 8)
<b>non linearity</b>	< 0.6 %
<b>cooling method</b>	adjustable: from -20 °C to +20 °C peltier with forced air (fan) and water cooling calibration setpoint: -10 °C
<b>trigger input signals</b>	frame trigger, sequence trigger, programmable input (SMA connectors)
<b>trigger output signals</b>	exposure, busy, programmable output (SMA connectors)
<b>data interface</b>	USB 3.1 Gen 1
<b>time stamp</b>	in image (1 µs resolution)

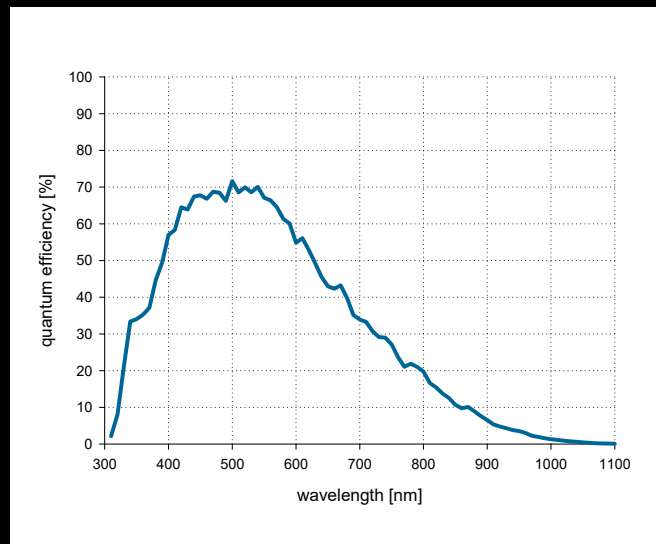
<sup>1</sup> The readout noise values are given as median (med) and root mean square (rms) values, due to the different noise models, which can be used for evaluation. All values are raw data without any filtering.



» general

<b>power delivery</b>	power over USB 3.1 Gen 1 and power connector (24 VDC +/- 10 %)
<b>power consumption</b>	22 W max. (typ. 10 W) over power connector and typ. 4.5 W over USB 3.1 Gen 1
<b>weight</b>	970 g
<b>operating temperature</b>	+ 10 °C .. + 40 °C
<b>operating humidity range</b>	10 % .. 80 % (non-condensing)
<b>storage temperature range</b>	- 10 °C .. + 60 °C
<b>optical interface</b>	F-mount, C-mount
<b>CE / FCC certified</b>	yes

» quantum efficiency



» frame rate table

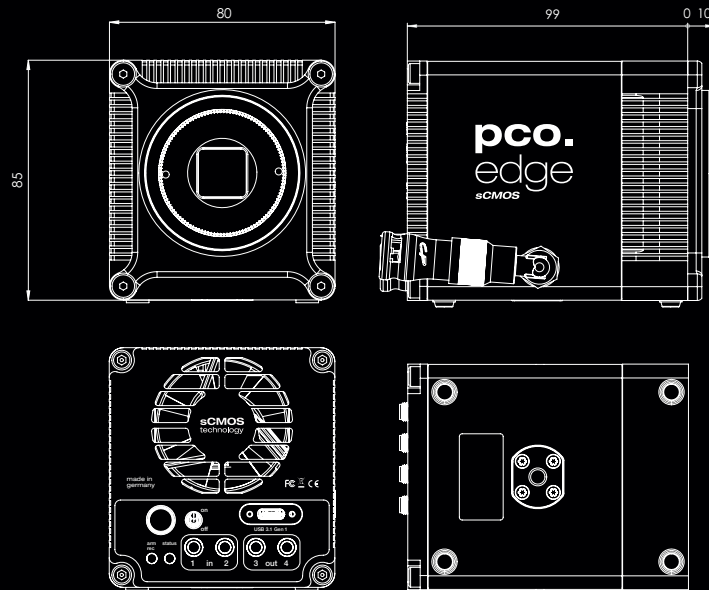
5120 x 5120	7.1 fps
5120 x 1024	35.6 fps
5120 x 512	70.9 fps
5120 x 256	141.1 fps
5120 x 128	279.0 fps
1920 x 1080	33.7 fps
1600 x 1200	30.4 fps
1280 x 1024	35.6 fps
640 x 480	75.7 fps
320 x 240	150.4 fps



» benefits

- anti-vibration technology with AlphaGEL®
- sealed electronics for dust & dirt protection
- optimized airflow with 3 separate intakes
- spider-less mounting with only 6.18 mm to image plane

» dimensions



F-mount and C-mount lens adapter are changeable. All dimensions are given in millimeter.

» camera view



» applications

brightfield microscopy | fluorescence microscopy | digital pathology | light sheet fluorescence microscopy (LSFM) | structured illumination microscopy (SIM) | high-speed bright field ratio imaging | high throughput screening | high content screening | biochip reading | spinning disk confocal microscopy | 3D metrology | industrial quality inspection

» software



With pco.camware you control all camera settings, the image acquisition and the storage of your image data. The pco.sdk is the complementary software development kit. It includes dynamic link libraries for user customization and integration on Windows-PC platforms. Drivers for popular third party software packages are also available for you.

All this items like pco.camware, pco.sdk and third party drivers, are free-to-download at [www.pco.de](http://www.pco.de).

» third party integrations



## find us

### europa

PCO AG  
Donaupark 11  
93309 Kelheim, Germany

+49 9441 2005 50  
info@pco.de  
pco.de

### america

PCO-TECH Inc.  
6930 Metroplex Drive  
Romulus, Michigan 48174, USA

+1 248 276 8820  
info@pco-tech.com  
pco-tech.com

### asia

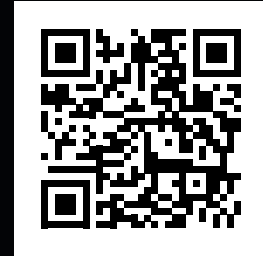
PCO Imaging Asia Pte.  
3 Temasek Ave  
Centennial Tower, Level 34  
Singapore, 039190

+65 6549 7054  
info@pco-imaging.com  
pco-imaging.com

### china

Suzhou PCO Imaging Technology Co., Ltd.  
Room A10, 4th Floor, Building 4  
Ascendas Xinsu Square, No. 5 Xingnan Street  
Suzhou Industrial Park, China 215021

+86 512 67634643  
info@pco.cn  
pco.cn



for application stories  
please visit our website



ISO 9001:2015